



Website: www.nustarenergy.com
 Luis Murillo - Wilmington Terminal Contact
 Phone: 424-473-3236
 Curtis Shorts - Selby Terminal Contact
 Phone: 510-207-0942

ABOUT SHORE TERMINALS LLC

You may be aware of Sunoco LP's recent acquisition of NuStar Energy L.P. through an all-stock purchase. All NuStar operating companies, including Shore Terminals LLC, still own and operate the same assets as before the transaction. In other words, no asset transfer or change of operational control has occurred. For the sake of clarity, this information only references NuStar; however, our communications going forward will be on Sunoco letterhead and from the Sunoco.com email domain.

Shore Terminals LLC is a subsidiary of NuStar Energy L.P. (NuStar), which is a publicly traded, limited partnership based in San Antonio, Texas. Shore Terminals LLC operates a petroleum bulk storage facility and associated short pipelines in Contra Costa County near Crockett, and a pipeline in Los Angeles county CA.

WHAT DOES NUSTAR DO IF A LEAK OCCURS?

To prepare for the event of a leak, pipeline companies regularly communicate, plan and train with local emergency responders. Upon the notification of an incident or leak the pipeline company will immediately dispatch trained personnel to assist emergency responders.

Pipeline operators and emergency responders are trained to protect life, property and facilities in the case of an emergency.

Pipeline operators will also take steps to minimize the amount of product that leaks out and to isolate the pipeline emergency.

MAINTAINING SAFETY AND INTEGRITY OF PIPELINES

Safety and environmental performance is NuStar's first priority. Ensuring the mechanical integrity of our pipelines helps us to successfully meet our goal of protecting employees, customers, contractors, and the public and environment. The NuStar Pipeline Integrity Management Program defines how we work to achieve this goal and comply with applicable laws and regulations.

The NuStar Pipeline Integrity Management Program assists us in preventing leaks and spills, determining pipelines that could affect High Consequence Areas (HCA's), and identifying evaluation and improvement opportunities.

PRODUCTS TRANSPORTED

Product: Hazardous Liquids [such as: crude oil, diesel fuel, jet fuel, gasoline, and other refined products]

Leak Type: Liquid

Vapors: Initially heavier than air and spread along ground and collect in low or confined areas. Vapors may travel to source of ignition and flash back. Explosion hazards indoors, outdoors or in sewers.

Health Hazards: Inhalation or contact

EMERGENCY CONTACT:

1-800-433-4250

PRODUCTS/DOT GUIDEBOOK ID#/GUIDE#:

Petroleum Products 1267 128

CALIFORNIA COUNTIES OF OPERATION:

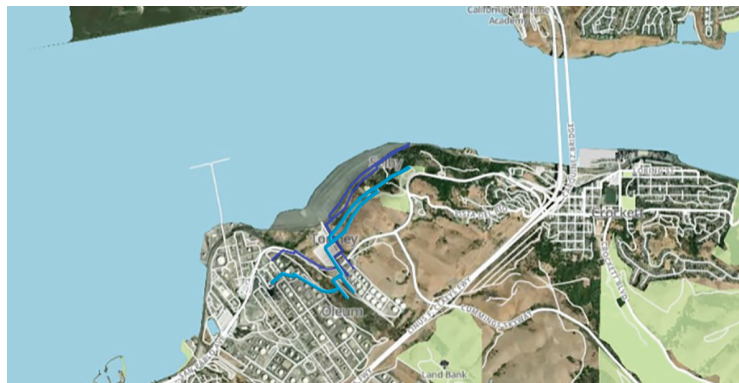
Contra Costa Los Angeles

Changes may occur. Contact the operator to discuss their pipeline systems and areas of operation.

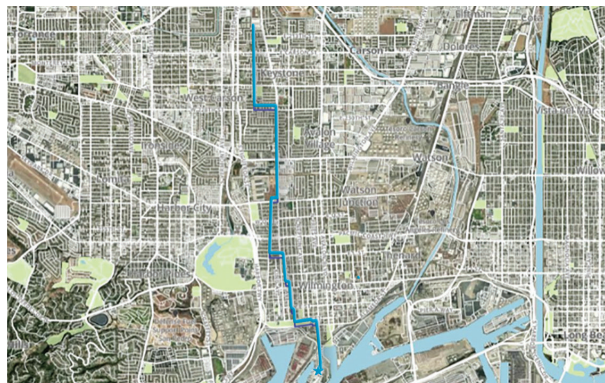
with material may irritate or burn skin and eyes. Fire may produce irritating, corrosive and/or toxic gases. Vapors may cause dizziness or suffocation. Runoff from fire control or dilution water may cause pollution.

HOW TO GET ADDITIONAL INFORMATION

For more information, please visit our website at www.nustarenergy.com or contact us directly at either terminal locations. Contacts are listed above.



Selby Terminal



Wilmington Terminal